

DOT Trader is a unique and powerful software application framework for financial markets trading. With an engineering approach, the user can visualize market movement through both real-time and historical dynamic data sources (sales, market depth, news, URLs, RSS, videos, etc.) in fully customized charts and windows. Our product applies globally to all electronic trading markets and to all asset classes (such as equities, futures, commodities, foreign exchanges, derivatives, and bonds).



Data: Visualize and analyze sales and market depth data, which are the orders to buy and the orders to sell. Interface module supports real-time and historical data for both retail and institutional clients. New data sources can hook in through the API.



Filter: Market depth price filter customizes the displayed inside market price range. Easily filter on specific broker dealers or exchanges. Statistical indicators, such as moving average, can be applied to all data types such as trade volume and bid order volume.



Display: Visualize the sales and market depth data in customized tables, financial charts, engineering charts, and integrated browsers. Save the window size and location to a template. Floating windows can be grouped and support multiple computer screens.

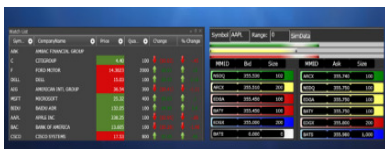


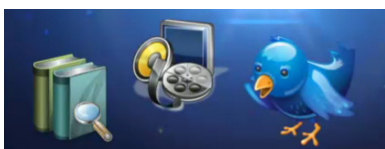
Table: Tables are useful in displaying raw data values and summary statistics. The summary table provides user defined statistics for a group of symbols such as trade price and total volume. The market depth table displays the bid volume and ask volume, color coded by price groups.



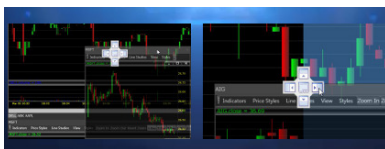
Financial chart: Financial charts are great for displaying data across time. The trade price and trade volume data can be displayed in multiple styles such as trade volume bar width. Heat maps can be applied to any statistical indicator. Visualize market depth pressure across time.



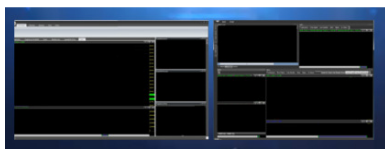
Engineering chart: Engineering charts support more creative relationships of data such as volume relative to trade price. Charts enable multiple user defined data series to be filtered and compared in various styles such as bar, area, and column.



Integrated browser: Event driven data such as news, research, and social media are all supported through our integrated browser. Our integrated browser can display any website desired. Streaming video, Twitter search, and RSS feeds are just a few examples.



Workspace: Customize the window size and location for all windows through drag and drop, docking, auto-hide, tabs, and floating windows. Maximize screen real estate by organizing the control and window panes. Floating windows can be grouped and moved to other computer screens.



Template: Enables quick loading, modifying, and saving of configuration settings. Layout templates define the size and contents of all window panes. Chart templates define chart type, active filters, colors, and timeframe. Browser templates define a list of URLs and page focus.



Modular: Allows third party modules to plug into our dynamic solution through the API documentation. The application supports modules such as pattern identification, trade execution, and neural network optimization. A generic data importer enables other industries to utilize our framework.